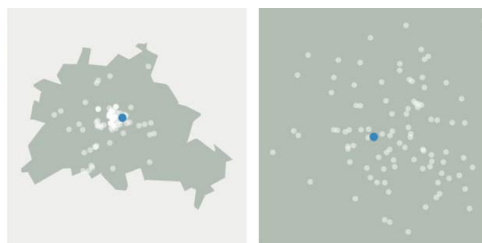
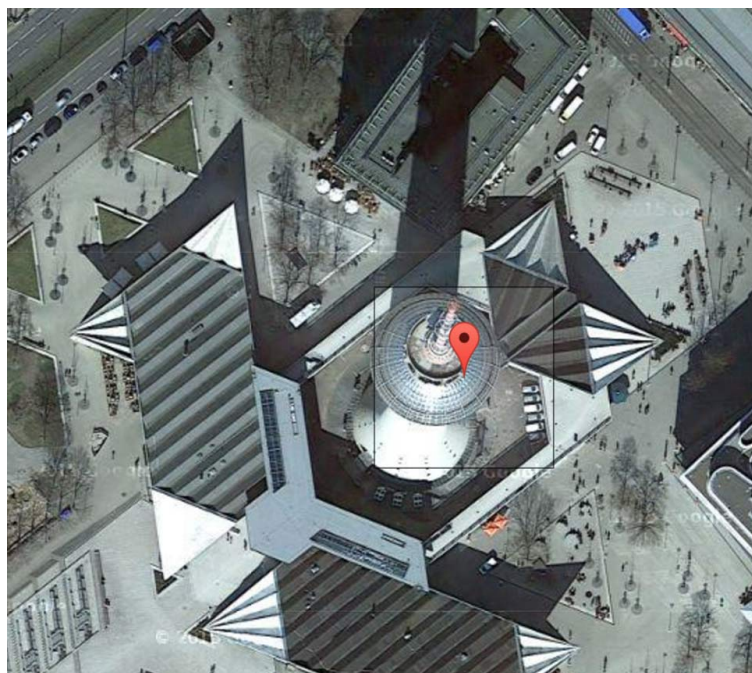


Terrapattern Berlin

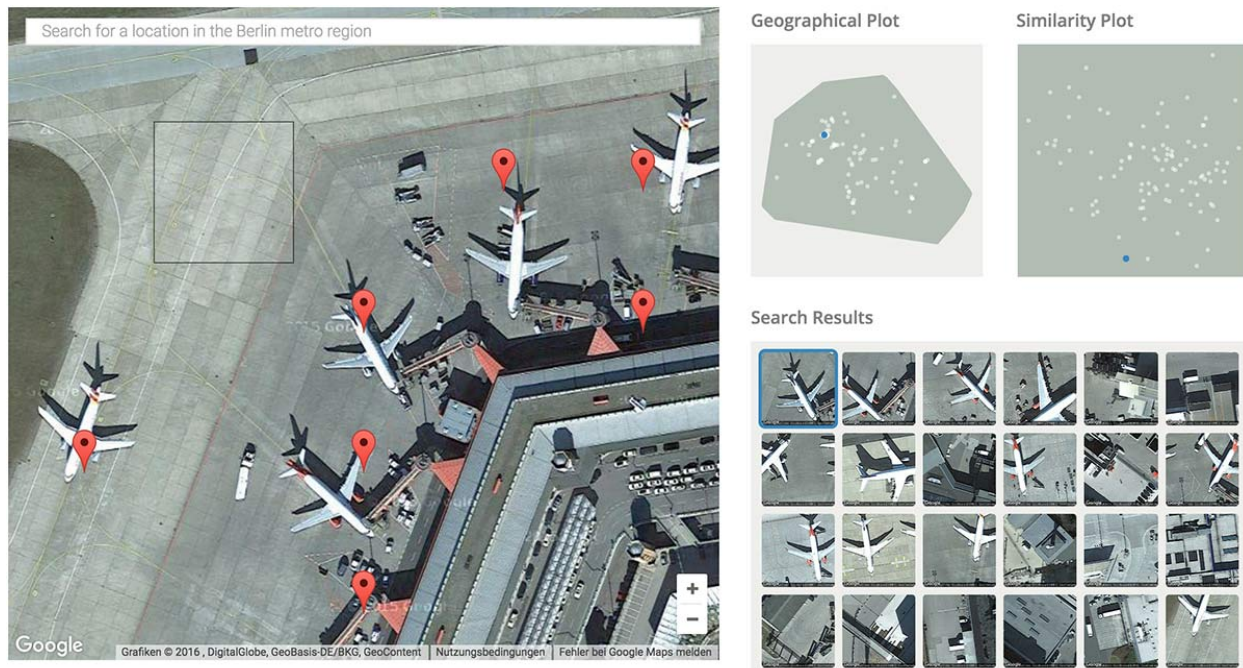
Gepostet vor 19 Stunden in [ALGOCULTURE](#) [ARCHITECTURE](#) [MAPS](#) [TECH](#)

[TWEET](#)[SHARE](#)

Search Results



Terrapattern ist ein schickes Online-Spielzeug von **Golan Levin**, **David Newbury** und **Kyle McDonald**, ein „Prototype for Visual Query-by-Example in Satellite Imagery“, oder anders gesagt: Klickste auf Satellitenbilder von Googlemaps, sucht's Dir ähnliche Locations raus. Funktioniert bislang bei einer handvoll Städte, **jetzt auch mit Berlin**.



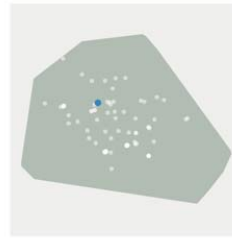
We present the alpha version of Terrapattern: "similar-image search" for satellite photos. It's an open-source tool for discovering "patterns of interest" in unlabeled satellite imagery—a prototype for exploring the unmapped, and the unmappable. Terrapattern provides an open-ended interface for visual query-by-example. Simply click an interesting spot on Terrapattern's map, and it will find other locations that look similar. Our tool is ideal for locating specialized 'nonbuilding structures' and other forms of soft infrastructure that aren't usually indicated on maps.

There has never been a more exciting time to observe human activity and understand the patterns of humanity's impact on the world. We aim to help people discover such patterns in satellite imagery, with the help of deep learning machine vision techniques.

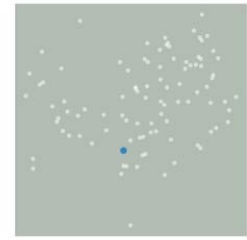
Ich hab mal damit rumgespielt:



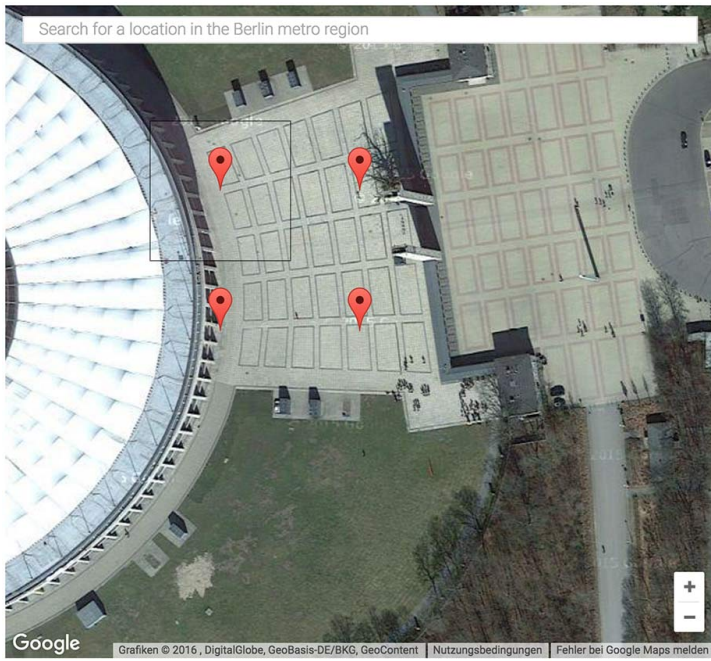
Geographical Plot



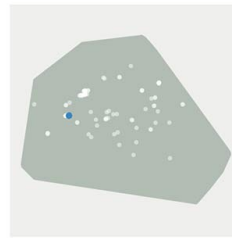
Similarity Plot



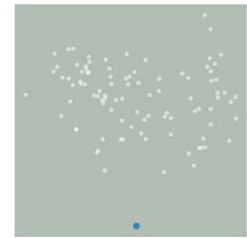
Search Results



Geographical Plot

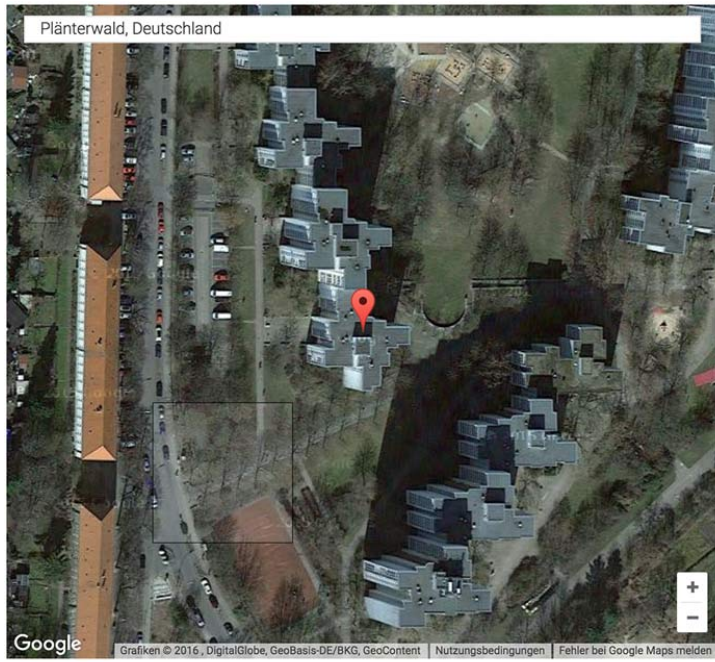


Similarity Plot

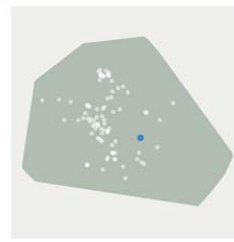


Search Results

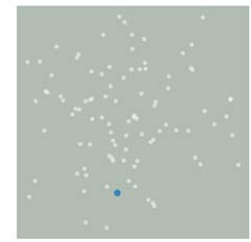




Geographical Plot



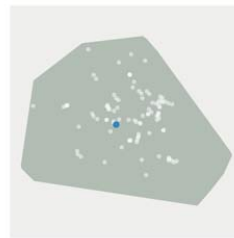
Similarity Plot



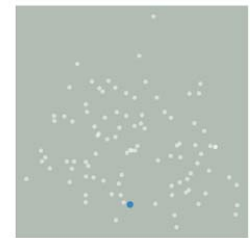
Search Results



Geographical Plot

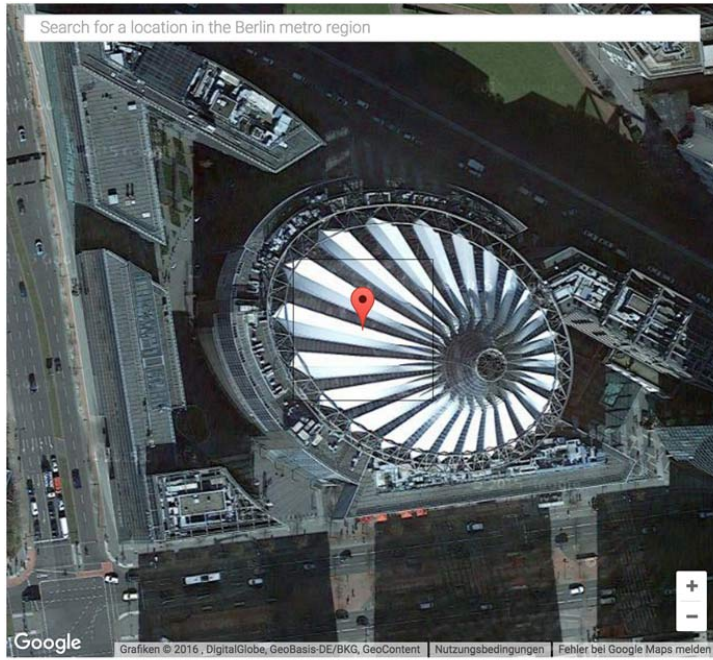


Similarity Plot

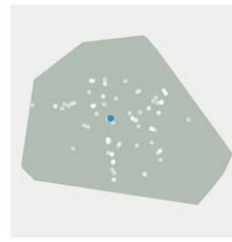


Search Results

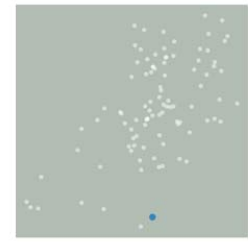




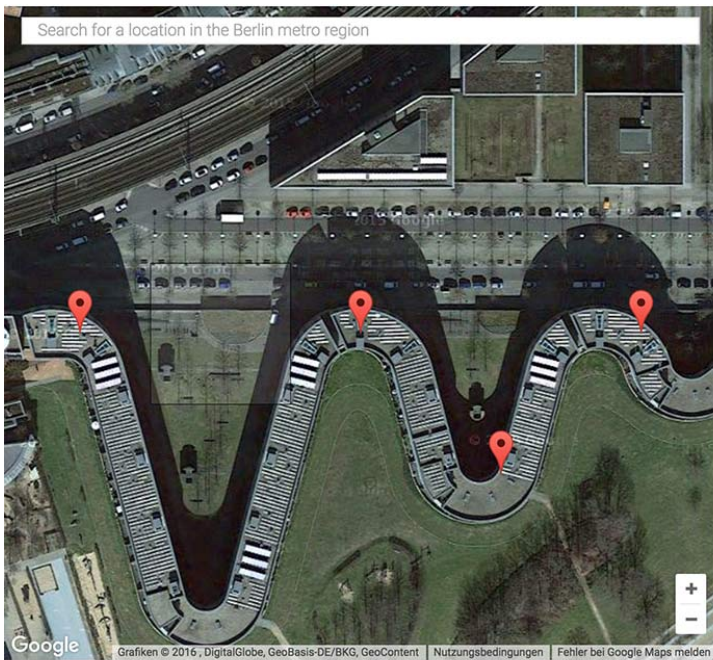
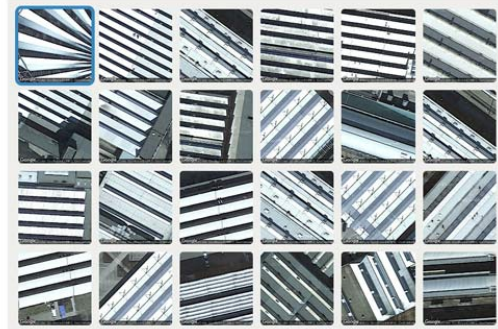
Geographical Plot



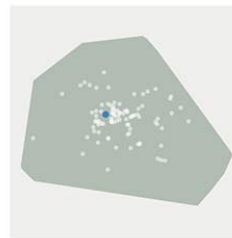
Similarity Plot



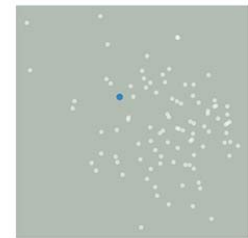
Search Results



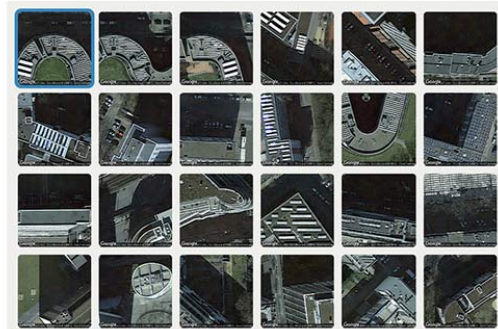
Geographical Plot

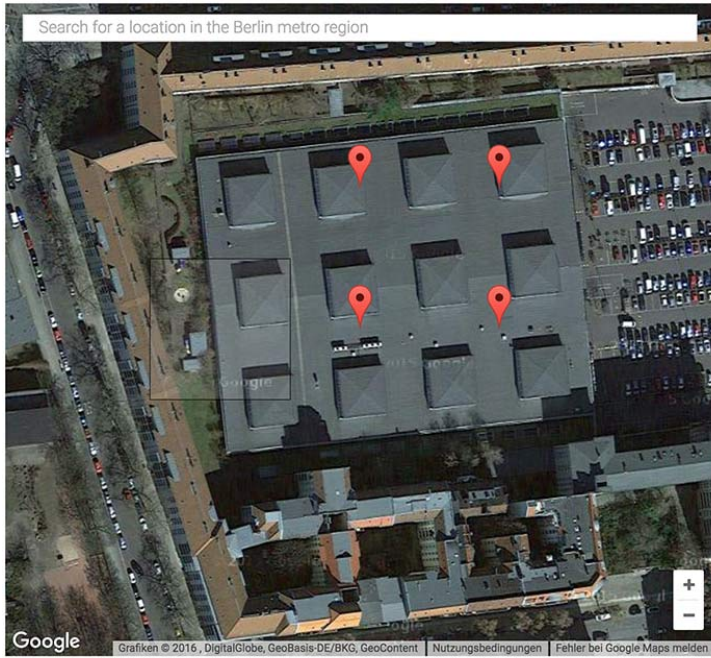


Similarity Plot

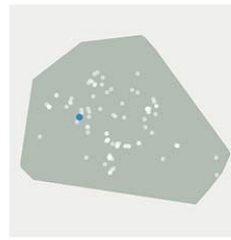


Search Results

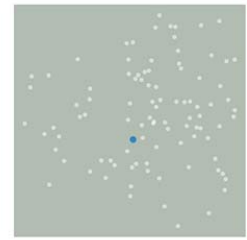




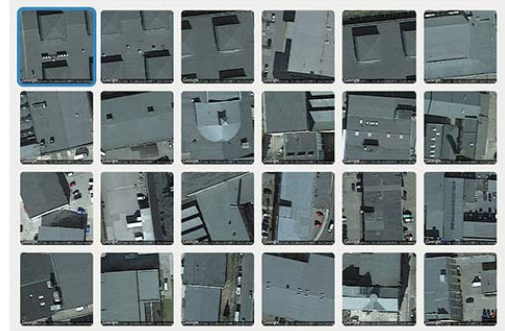
Geographical Plot



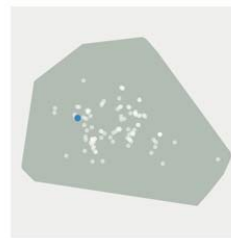
Similarity Plot



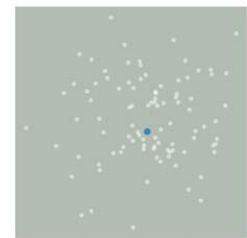
Search Results



Geographical Plot



Similarity Plot



Search Results

